

AN ISO 9001 : 2015 CERTIFIED COMPANY



# SUPER TECH

WATER WELL DRILLING RIGS

GEO TECHNICAL DRILLING RIGS

CORE DRILLING RIGS

DRILLING TOOLS & ACCESSORIES

[www.supertechagro.com](http://www.supertechagro.com)



## Our Directors / Chairmen



Mr. Sanjay M. Savaliya Mr. Girish M. Savaliya

## Engineering excellence for **BETTER DRILLING**

### Company Intro ...

We are Super Tech, India's leading manufacturer, Supplier & exporter of DTH Drilling Rigs, Geo Technical Drilling Rigs, Core Drilling Rigs, Air Compressors, Drilling Tools & Accessories.

We have adopted world class technology for the manufacturing of the machine.

With the introduction of the new machines for various applications, the company experienced steady growth and quickly became a major within the drilling industry.

We have a big infrastructure facility require for supply / manufacturing of bulk and fast quality machine at time. We have separate workshop for the service and maintenance of the rig machine.

Our machines / rigs are successfully working since so many years in the India, Gulf Countries and African Continent.

In a world of product-oriented companies that believe to give the best value with mass productions strategies, Super Tech still remains a customer oriented company ready to solve any technical challenge proposed by clients with specific requirements.

### Mission & Vision

We offer world's best machine to the customer that gives peace of mind with lot of wealth.

Also our mission to supply of good quality machine that will be able to get water from the deepest level of the land, and it will be helpful for the people to solve problem and scarcity of good water.

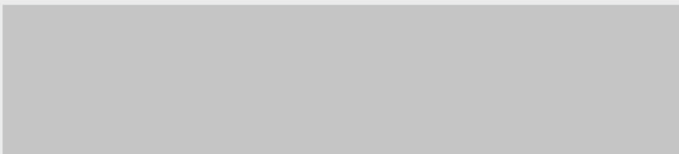
Our vision is to be reputed and biggest company in the drilling industry within next 5 years.

Engrained in Super Tech, is the goal to provide its customers with products of the highest quality customer service, something that has never changed.

AN ISO 9001 : 2015 CERTIFIED COMPANY

***“THE BEST GIFT***

*You can give to **FUTURE** generation is  
**WATER”***

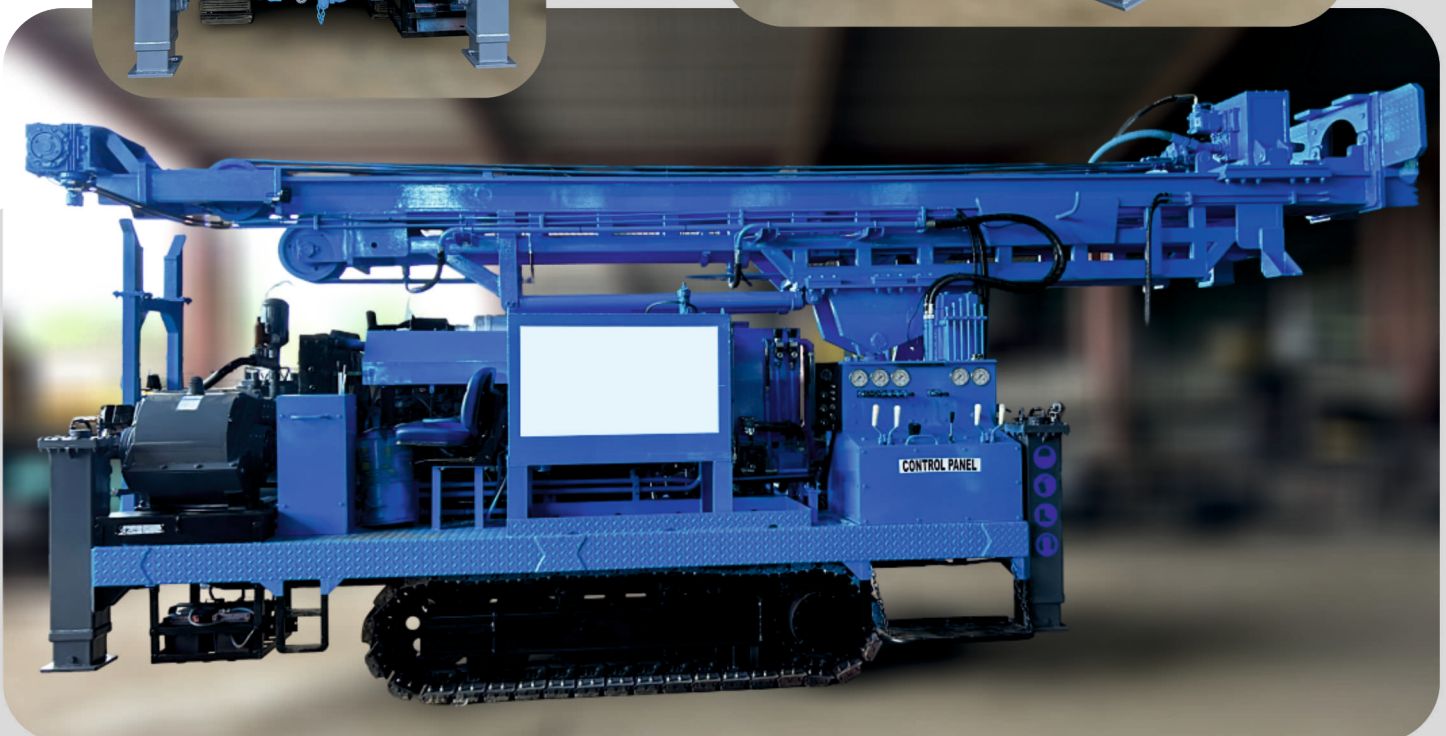
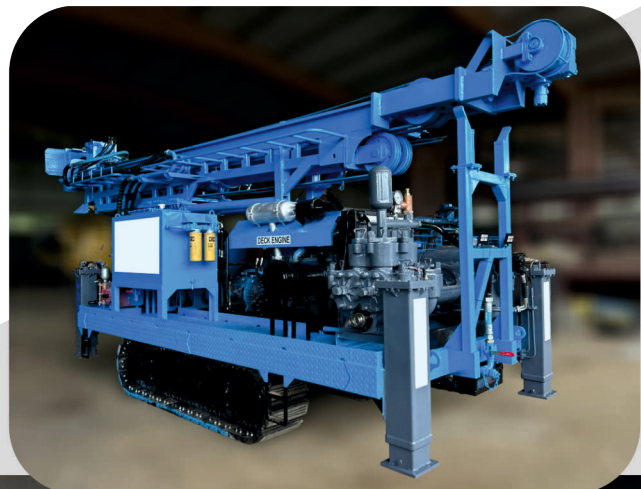
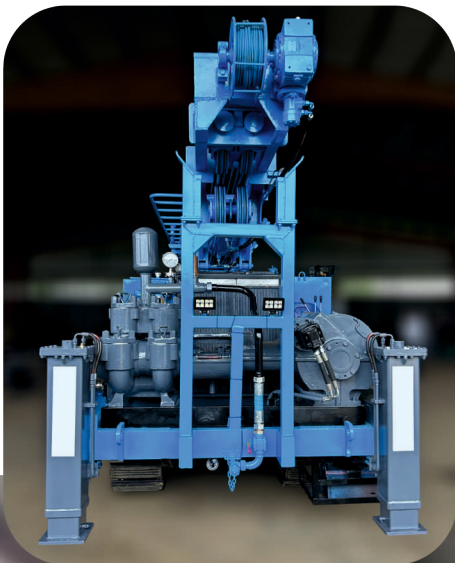


***“Water is the most precious element in the world”***

<b>Application</b>	Water well   Solar   Pilling   Earthing   Dewatering   Soil Testing		
<b>Drilling Method</b>	DTH Air & Rotary Drilling		
<b>Hole diameter range</b>	100 - 200 mm (4" - 8")		
<b>Maximum depth</b>	325 ft (100 m)		
<b>Rotary Head</b>	Torque : 3200 Nm	Speed : 0- 150 RPM	
<b>Rod Handling</b>	1.5 - 3m (5 - 10 ft)		
<b>Feed cylinder</b>	125 mm dia hydraulic cylinder with hard chrome		
<b>Pull up force</b>	5200 kgf		
<b>Pull down force</b>	3000 kgf		
<b>Suitable air compressor</b>	550 cfm - 200 psi	575 cfm - 225 psi	850 cfm - 290 psi
<b>Mounting option</b>	4x2 Truck   Skid Mounted   Crawler Mounted   Trolley Mounted		



<b>Application</b>	Geo Technical Soil Investigation		
<b>Drilling Method</b>	DTH Air   Rotary   Core   SPT   Auger Drilling		
<b>Hole diameter range</b>	75 - 305 mm (3" - 12")		
<b>Maximum depth</b>	650 ft ( 200 m )		
<b>Rotary Head</b>	Torque : 4200 Nm	Speed : 0- 800 RPM	
<b>Deck Engine</b>	Ashok Leyland / Cummins 180 HP - 220 HP		
<b>Rod Handling</b>	1.5 - 3 m (5 - 10 ft)		
<b>Feed cylinder</b>	140 mm dia hydraulic cylinder with hard chrome		
<b>Pull up force</b>	7500 kgf		
<b>Pull down force</b>	5000 kgf		
<b>Suitable air compressor</b>	575 cfm - 225 psi	900 cfm - 200 psi	1100 cfm - 300 psi
<b>Mounting option</b>	Crawler Mounted   Trolley Mounted   Skid Mounted   Truck Mounted		



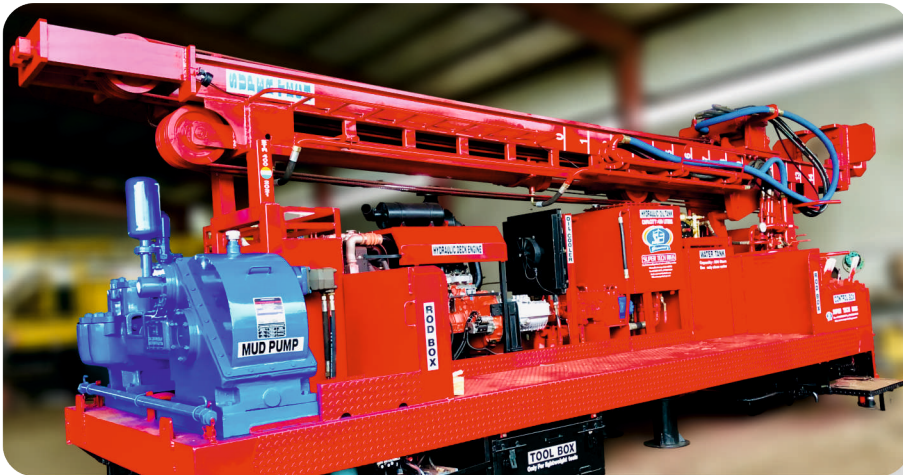
<b>Application</b>	Water Well   Solar   Pilling   Mining   Earthing   Geo Technical		
<b>Drilling Method</b>	DTH Air Drilling & Rotary Drilling		
<b>Hole diameter range</b>	DTH : 115 – 250 mm ( 4 1/2” – 10” )		
<b>Maximum depth</b>	Pilling : 800 mm   DTH : 650 ft ( 200 m )   Pilling : 60 m		
<b>Rotary Head</b>	Torque : 4500 Nm	Speed : 0- 130 RPM	
<b>Rod Handling</b>	1.5 - 3 m ( 5 - 10 ft )		
<b>Feed cylinder</b>	140 mm dia hydraulic cylinder with hard chrome		
<b>Pull up force</b>	7500 kgf		
<b>Pull down force</b>	5000 kgf		
<b>Suitable air compressor</b>	575 cfm - 225 psi	900 cfm - 200 psi	1100 cfm - 300 psi
<b>Mounting option</b>	Tractor 60 / 75 / 90 HP ( 4X4 )		



<b>Application</b>	Water Well   Solar   Piling	
<b>Drilling Method</b>	DTH Air & Rotary Drilling	
<b>Hole diameter range</b>	165 - 450 mm (6 1/2" - 18" )	
<b>Maximum depth</b>	800 ft ( 250 m)	
<b>Rotary Head</b>	Torque : 5500 Nm	Speed : 0- 150 RPM
<b>Rod Handling</b>	1.5 - 3m (6 - 10 ft)	
<b>Feed cylinder</b>	160 mm dia hydraulic cylinder with hard chrome	
<b>Pull up force</b>	11000 kgf	
<b>Pull down force</b>	7000 kgf	
<b>Suitable air compressor</b>	1100 cfm - 300 psi	1200 cfm - 330 psi
<b>Mounting option</b>	Suitable for 4X2 / 6X4 any Trucks   Skid Mounted	



<b>Application</b>	Water Well	
<b>Drilling Method</b>	DTH Air & Mud Rotary Drilling	
<b>Hole diameter range</b>	DTH Air Drilling : 165-305mm (6 1/2"-12")	Mud Rotary Drilling : 165-350mm (6 1/2"-14")
<b>Maximum depth</b>	1000 ft ( 300 m)	
<b>Rotary Head</b>	Torque : 5500 Nm	Speed : 0- 120 RPM
<b>Deck Engine</b>	Ashok Leyland 180 HP / 188 HP	
<b>Rod Handling</b>	3 - 4.6 m (10 - 15 ft)	
<b>Feed cylinder</b>	160 mm dia hydraulic cylinder with hard chrome	
<b>Pull up force</b>	11000 kgf	
<b>Pull down force</b>	7000 kgf	
<b>Suitable air compressor</b>	1100 cfm - 300 psi	1200 cfm - 330 psi
<b>Mounting option</b>	Suitable for 4X2 / 6X4 any Trucks   Skid Mounted	



<b>Application</b>	Water Well	
<b>Drilling Method</b>	DTH Air Drilling & Mud Rotary Drilling	
<b>Hole diameter range</b>	DTH Air Drilling : 165 - 305 mm ( 6 1/2" - 12" )	
<b>Maximum depth</b>	1300 ft ( 400 m )	
<b>Rotary Head</b>	Torque : 6500 Nm	Speed : 0- 120 RPM
<b>Deck Engine</b>	Ashok Leyland / Cummins 180-220 HP OR power from Truck engine	
<b>Rod Handling</b>	3 - 6 m (10 - 20 ft)	
<b>Feed cylinder</b>	160 - 180 mm dia hydraulic cylinder with hard chrome	
<b>Pull up force</b>	15000 kgf	
<b>Pull down force</b>	11000 kgf	
<b>Suitable air compressor</b>	1100 cfm - 300 psi	1200 cfm - 330 psi
<b>Mounting option</b>	Suitable for 6X4 any Trucks   Skid Mounted	



**STR DTH 600 TWO TRUCK MOUNTED RIG WITH HYDRAULIC ROD CHANGER**

<b>Application</b>	Water Well		
<b>Drilling Method</b>	DTH Air Drilling & Mud Rotary Drilling		
<b>Hole diameter range</b>	165 - 305 mm (6 1/2" - 12" )		
<b>Maximum depth</b>	2000 ft ( 610 m)		
<b>Rotary Head</b>	Torque : 6500 Nm	Speed : 0- 120 RPM	
<b>Deck Engine</b>	Ashok Leyland 188 HP / 220 HP		
<b>Rod Handling</b>	4.6 - 6 m (15 - 20 ft)		
<b>Feed cylinder</b>	180 - 200 mm dia hydraulic cylinder with hard chrome		
<b>Pull up force</b>	17000 kgf		
<b>Pull down force</b>	12000 kgf		
<b>Suitable air compressor</b>	1100 cfm - 300 psi	1200 cfm - 330 psi	1350 cfm - 365 psi
<b>Mounting option</b>	Suitable for 6X4 any Trucks   Skid Mounted		



<b>Application</b>	Water Well		
<b>Drilling Method</b>	DTH Air & Mud Rotary Drilling		
<b>Hole diameter range</b>	DTH Air Drilling : 165 – 405 mm (6 1/2” - 16”)		
<b>Maximum depth</b>	2600 ft ( 800 m )		
<b>Rotary Head</b>	Torque : 14000 Nm	Speed : 0- 120 RPM	
<b>Deck Engine</b>	Ashok Leyland / Cummins / Volvo Penta 218 - 360 HP		
<b>Rod Handling</b>	4.6 - 6 m (15 - 20 ft)		
<b>Feed cylinder</b>	160 mm dia dual hydraulic cylinders with hard chrome		
<b>Pull up force</b>	27000 kgf		
<b>Pull down force</b>	18000 kgf		
<b>Suitable air compressor</b>	1200 cfm - 330 psi	1350 cfm - 365 psi	Dual Compressors
<b>Mounting option</b>	Suitable for 8X4 OR 10x4 any Trucks   Skid Mounted		





## STR DTH 1000 TWO TRUCK MOUNTED RIG WITH HYDRAULIC ROD CHANGER

<b>Application</b>	Water Well   Dewatering			
<b>Drilling Method</b>	DTH Air Drilling   Mud Rotary Drilling			
<b>Hole diameter range</b>	165 - 305 mm ( 6 1/2" - 12" )			
<b>Maximum depth</b>	3300 ft ( 1000 m )			
<b>Rotary Head</b>	Torque : 16000 Nm	Speed : 0- 120 RPM		
<b>Deck Engine</b>	Ashok Leyland / Cummins / Volvo Penta 218 - 360 HP			
<b>Rod Handling</b>	4.6 - 6 m (15 - 20 ft)			
<b>Feed cylinder</b>	160 - 180 mm dia dual hydraulic cylinders with hard chrome			
<b>Pull up force</b>	29000 kgf			
<b>Pull down force</b>	17000 kgf			
<b>Suitable air compressor</b>	1200 cfm - 330 psi	1350 cfm - 365 psi	Dual Compressors	Air Booster
<b>Mounting option</b>	Suitable for 8X4 OR 10x4 any Trucks   Skid Mounted			

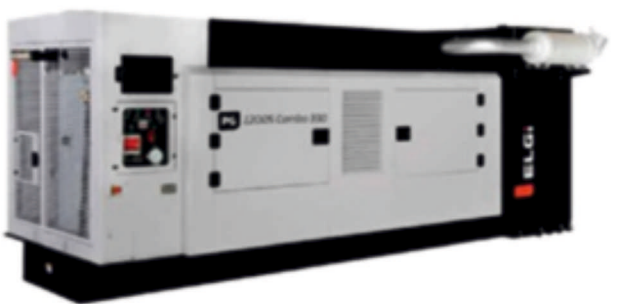


<b>Application</b>	Water Well			
<b>Drilling Method</b>	DTH Air & Mud Rotary Drilling			
<b>Hole diameter range</b>	DTH Air Drilling : 165 - 405 mm ( 6 1/2" - 16" )			
<b>Maximum depth</b>	4000 ft ( 1200 m )			
<b>Rotary Head</b>	Torque : 18000 Nm	Speed : 0- 120 RPM		
<b>Deck Engine</b>	Ashok Leyland / Cummins / Volvo Penta 218 - 360 HP			
<b>Rod Handling</b>	4.6 - 6 m (15 - 20 ft)			
<b>Feed cylinder</b>	160 - 180 mm dia dual hydraulic cylinders with hard chrome			
<b>Pull up force</b>	52000 kgf			
<b>Pull down force</b>	21000 kgf			
<b>Suitable air compressor</b>	1200 cfm - 330 psi	1350 cfm - 365 psi	Dual Compressors	Air Booster
<b>Mounting option</b>	Suitable for 8X4 OR 10x4 any Trucks   Skid Mounted			





<b>Brand</b>	Atlas Copco   ELGI   Doosan/Bobcat   Chicago Pneumatic
<b>CFM</b>	185 - 1500
<b>PSI</b>	100 - 500
<b>Drilling Capacity</b>	1200 Meters
<b>Mounting option</b>	Skid & Trolley



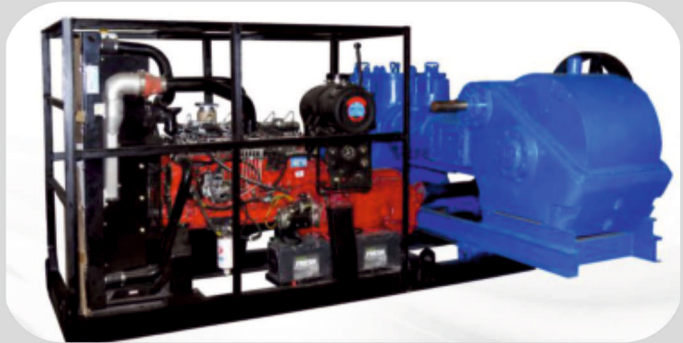
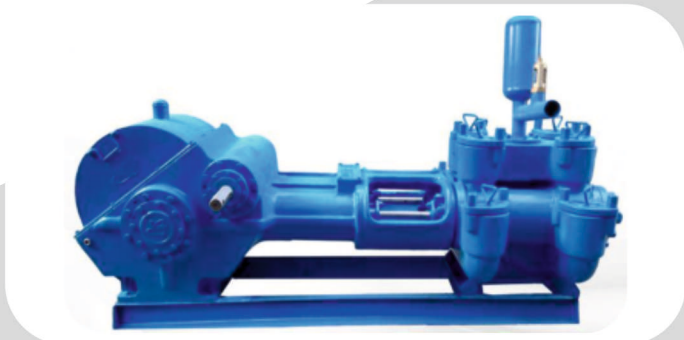
**DTH AIR / MUD ROTARY DRILLING TOOLS**

<b>DTH Hammers for Air Drilling</b>	100 - 300 mm
<b>DTH Button Bits</b>	4" - 20"
<b>Application</b>	Water well & Mining
<b>Suitable Formation / Strata</b>	Medium & Hard
<b>Suitable Formation / Strata</b>	Mud Rotary Drilling Bit - 6" - 24" (125 - 610 mm)
<b>Suitable Formation / Strata</b>	Soft , Medium & Hard
<b>Types of Bits</b>	Rock Roller, Tricone, Drag , PDC & Clay



**MUD PUMPS**

<b>Medel</b>	Stroke : 5" - 10" (125 - 250 mm)
<b>Liner</b>	4" - 7 1/2" (100 - 190 mm)
<b>Displacement</b>	350 -2400 LPM
<b>Drilling Capacity</b>	1000 Meters
<b>Types</b>	Duplex double acting piston type Hydraulic driven & Engine driven



<b>Drill pipe size</b>	63 - 180 mm (2 1/2" - 7")
<b>Application</b>	Water well, Mining, Pilling, Exploration, Geo Technical, RC
<b>Drill pipe type</b>	Seamless steel pipe fresh finished tested material
<b>Adaptor Thread</b>	API Standard
<b>Wall Thickness</b>	5 - 11 mm
<b>Drill pipe Length</b>	1.5 - 7 meters
<b>Welding Option</b>	Mig welded & Friction Welded
<b>Drilling Capacity</b>	1500 meters with borehole dia. 2 1/2" - 20"
<b>Special Feature</b>	Friction welded with Induction hardness





MANUFACTURING UNIT OF SUPER TECH





**IMPORTANT NOTES**

A series of horizontal dashed lines for writing notes.



### Global Presence of SUPER TECH

- ▼ Manufacturing
- Sales (Algeria, Sudan, UAE, Oman, Saudi Arabia. Qatar)
- Global Presence



### SUPER TECH AGRO PRODUCT INDUSTRIES

Plot No. 02, Shivam Industrial Area, Opp. Avadh Namkeen,  
Rajkot-Kalavad Road, At. Nikava, Tal. Kalavad,  
Dist. Jamnagar - 361 162, Gujarat, India.

Mo. +91 82380 00774, 98252 66104

E-mail : [supertechrigs@yahoo.com](mailto:supertechrigs@yahoo.com) Web : [www.supertechagro.com](http://www.supertechagro.com)



We Support "MAKE IN INDIA" Campaign